

ALL TERRAIN LIFT & CARRY MOBILE CRANE



Quality
Endorsed
Company
ISO 9001:1994
QEC 10610



UC-15

FRANNA UC-15 CRANE SPECIFICATIONS



RATED CAPACITY:
 15 Tonne at 1.6m Radius
 1.55 Tonne at 12.28m Radius (power boom)
 1.05 Tonne at 16.33m Radius (manual ext.)
 Max Hook Height 20.4 m
 Fall Block (3 parts) capacity 10.5 tonne

AXLE LOADINGS:
 Front Axle: 5 900 kg
 Rear Axle: 10 000 kg
 TOTAL : 15 900 kg

TURNING RADIUS:
 Outside Wheels
 6.6 metres

DIMENSIONS:
 Overall Length 9.495 metres
 Overall Width 2.490 metres
 Overall Height 2.925 metres

PERFORMANCE:
 Maximum - 45 km/h
 Gradability - 50 %

ENGINE:
 Perkins 1004-40T 4 Cylinder
 Turbocharged
 80.5 kW (108 HP)
 at 2500 rpm
 394 Nm (290 ft.lbf)
 at 1400 rpm.

TRANSMISSION:
 Carraro TLB 2
 Torque converter driven,
 Electronic Full Powershift,
 4 Speed Forward/Reverse.

DRIVE SHAFTS:
 Spicer Series 1410

FRONT DRIVE AXLE:
 Carraro 28.43M –
 13 tonne Capacity
 Rigid planetary drive axle,
 with driver selectable
 hydraulic actuated
 differential lock.

REAR DRIVE AXLE:
 Carraro 28.43M –
 13 tonne Capacity
 Rigid planetary drive axle.

TYRES/RIMS:
 Front: 11.00 x 20 16
 PR Dual Tyres
 8 x 20 Rim (10 stud)
 Rear: 11.00 x 20 16
 PR Dual Tyres
 8 x 20 Rim
 (10 stud)

BRAKES:
 Power assisted dual circuit
 hydraulic.
 Front: Inboard self-adjusting,
 oil immersed, multi-plate
 disc brakes.
 Rear: Inboard self-adjusting,
 oil immersed, multi-plate
 disc brakes.
 Park: Spring applied
 hydraulic release park brake
 on rear axle.

CABIN:
 Two Person, insulated
 lock up cabin.
 Ergonomic tilt/telescopic
 steering wheel, gauge
 cluster and wraparound
 centre console.

FUEL TANK:
 Integral 355 litre tank
 in rear body.

ARTICULATION:
 Twin Heavy Duty self-
 aligning bearings with
 separate seals, externally
 adjustable top and bottom,
 giving 40° articulation.

STEERING:
 Full Power ORBITROL with
 twin cushioned hydraulic
 double acting rams. Priority
 flow from main pump supply
 plus electro hydraulic
 emergency supply.

HYDRAULIC PUMP:
 Load Sensing Axial
 Piston Pump
 Maximum Flow:
 110 litres/min
 Maximum
 Working
 Pressure:
 210 Bar

HYDRAULIC WINCH:
 Electrically switched
 Two Speed Winch
 Max. Rope Speed High:
 80 metres/min
 Max. Rope Speed Low:
 40 metres/min
 Maximum line pull with full
 drum: 3.5 tonne
 3/2 part Fall Block with
 10.5 tonne capacity Fully
 compensated hook height
 whilst telescoping the boom.

HYDRAULIC TANK:
 Integral 120 litre tank in rear
 body, with remote mounted
 return and in tank suction
 filters.

LOAD INDICATOR
 Fully integrated
 computerised load moment
 indicator with motion cutouts
 and axle loadings displayed.

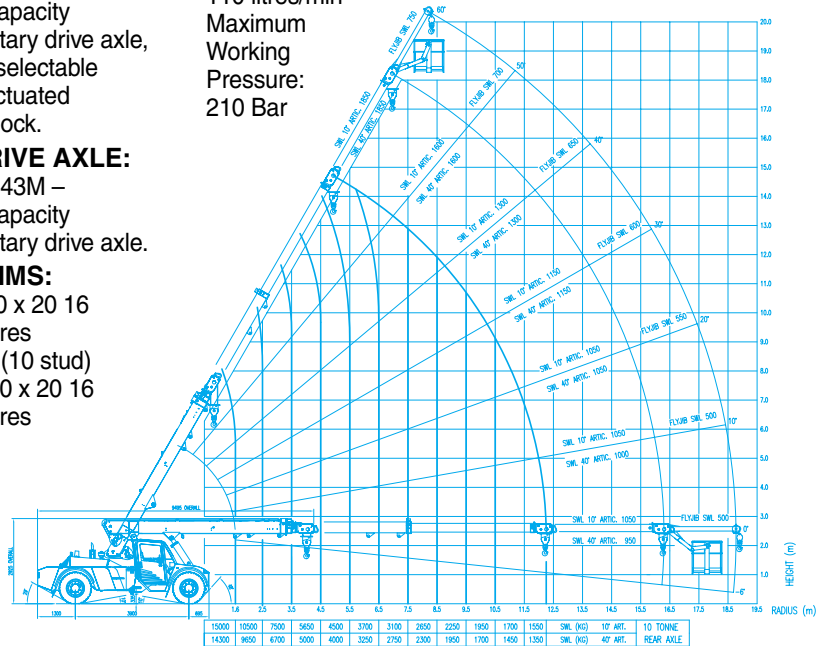
STANDARD EQUIPMENT

- Air Conditioning
- 8 tonne Machinery Hook
- Work Lights
- Central Greasing

OPTIONAL EQUIPMENT

- Front Mounted Spreader Bar
- Fly Jib
- 275 kg SWL Man Basket
- Spare Wheel and Carrier
- AM/FM Radio Cassette
- Fire Extinguisher
- Others on Application

Specifications subject to change without notice.



TEREX LIFTING AUSTRALIA PTY. LTD.

ABN 86 010 671 048

**585 Curtin Avenue East Eagle Farm Brisbane
 Qld 4009 Australia**

Telephone: +61 7 3868 9600 Facsimile: +61 7 3268 2489

Email: info@franna.com.au

PATENTED DESIGN